



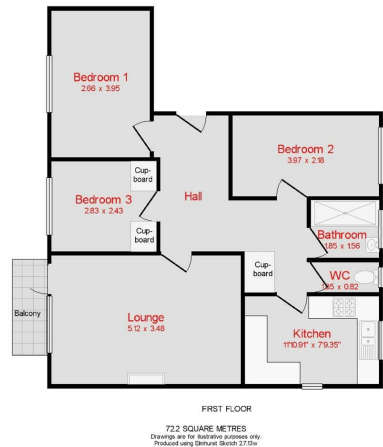
10 Silver Street, Portsmouth, PO5 3BW

£1,185 PCM Council Tax Band B Deposit £1,367

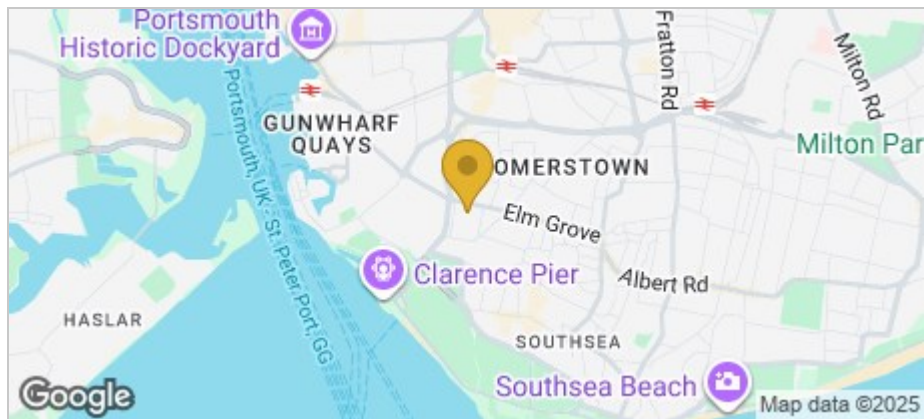


Tully's

Floor Plan



Area Map



Accommodation

- HOLDING DEPOSIT - £273.00
- DEPOSIT - £1367.00
- NEWLEY REDECORATED THROUGHOUT
- NEW FLOOR COVERINGS
- 3 BEDROOMS
- BALCONY
- CENTRAL SOUTHSEA LOCATION
- IDEALLY SUITED FOR A FAMILY
- **NOT TO BE MISSED**

Viewing

Please contact our Southsea Office on 023 9273 2241 if you wish to arrange a viewing appointment for this property or require further information.

Energy Efficiency Graph

